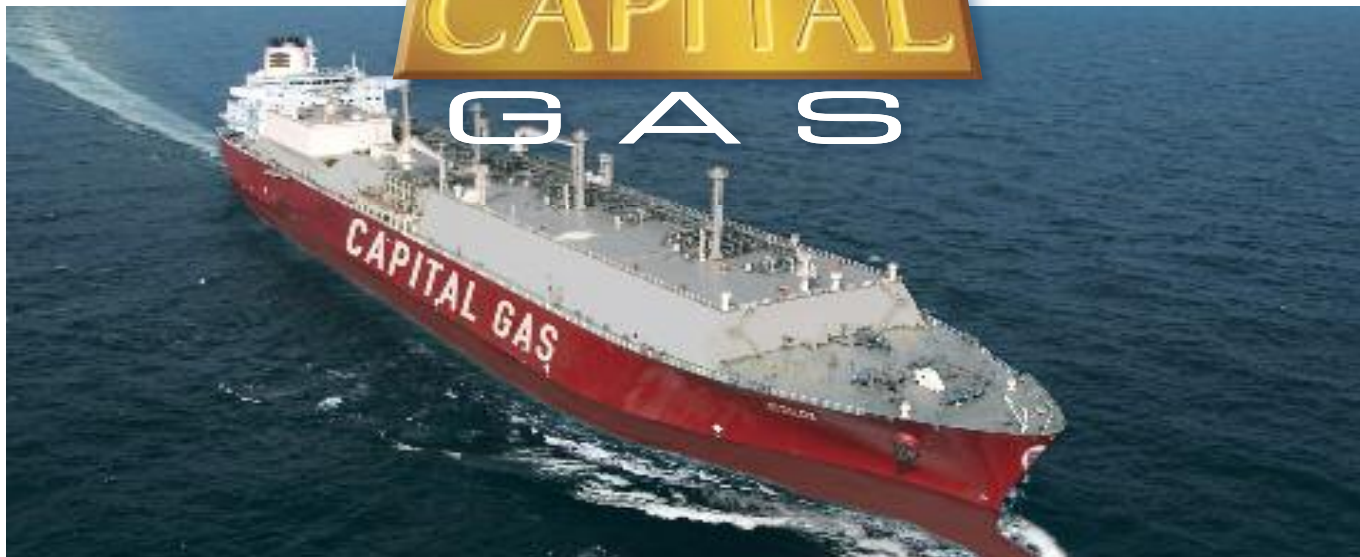


CAPITAL GAS



ARISTOS I ARISTIDIS I ATTALOS ARISTARCHOS ADAMASTOS ASKLIPIOS ASTERIX I

BUILT: 2020-2021

BUILDER: Hyundai Heavy Industries, S.Korea

CLASS: LRS/ABS

FLAG: MALTA



TYPE OF VESSEL: LNG CARRIER

CONTAINMENT SYSTEM: GTT MKIII FLEX

MAIN DIMENSIONS

Length overall	abt 299 m
Length between perp.	291 m
Breadth	46,4 m
Depth	26,5 m
Draught Design (Td)	11,5 m
Draught Scantling (Ts)	12,5 m

DEADWEIGHT

Deadweight at Td	abt 81,451 MT
------------------	---------------

TANK CAPACITIES

H.F.O./U.L.S.F.O.	abt 5,000 m ³
M.G.O./L.S.M.G.O.	abt 500 m ³
Fresh water	abt 400 m ³
Ballast water	abt 64,500 m ³
Urea abt.	abt 70 m ³

COMPLEMENT

38 p

CARGO CAPACITIES (100% full)

Cargo tanks (excl. domes)	174,000 m ³
---------------------------	------------------------

BOR

ACTIVE BOR	0.085%/day
	0.040%/day

MAIN ENGINE

TYPE	Two, HYUNDAI - WINGD 5X72DF
Turning method	Standard
NOx Tier III solution	Diesel mode with HP SCR and gas mode
Nominal rating	2 x 16,125 kW
MCR	2 x 12,112 kW

SERVICE SPEED

Service speed at Td / NCR	19.5 kts
Sea margin	20%

ENERGY SAVING DEVICE

Hi-Fin, Hi-Rudder

F.O. CONSUMPTION OF M/E @ A/E

F.O.C. at NCR (incl. G/Service)	abt 92.00 t/d
G.C. at NCR (incl. G/Service)	abt 77.1 t/d

CRUISING RANGE

abt 24,100 NM

MANIFOLD SERVICE CRANE

10 tons S.W.L. x 2 sets

PUMPS

CARGO PUMP	1,850 m ³ /hr x 165mlc x 8 sets
SPRAY PUMP	50 m ³ /hr x 145 mlc x 4 sets
BALLAST PUMP	3,000 m ³ /hr x 35mTH x 3 sets

POWER SUPPLY

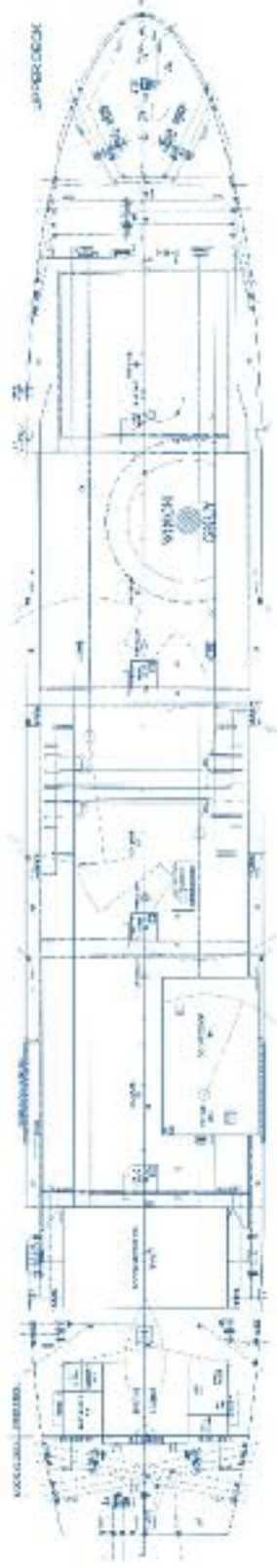
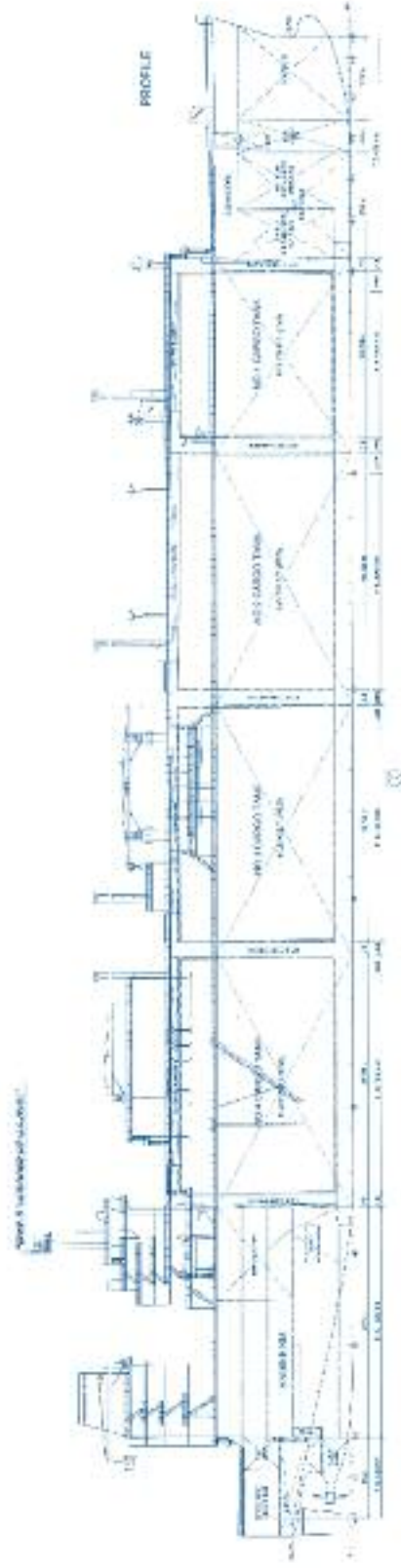
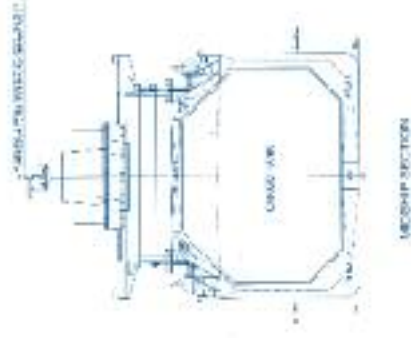
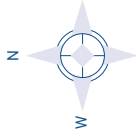
Diesel Generator	3,680 kW x 2 sets
	2,760 kW x 2 sets
Emergency Generator	750 kW x 1 set

NAVIGATION EQUIPMENT

2 - ECDIS with route planning function	
1 - Conning Display	1 - Speed Log
2 - Radar (ARPA)	2 - Gyro Compass
1 - Auto Pilot	2 - DGPS Navigator

ALL DETAILS APPROX.

CAPITAL GAS



ARISTOS I ARISTIDIS I ATTALOS
ARISTARCHOS ADAMASTOS ASKLIPIOS ASTERIX I

3, Iasonos Street, 18537 Piraeus, Greece
Tel: +30 210 4584950, Fax: +30 210 4284285
email: projects@capitalgas.gr - www.capitalgas.gr